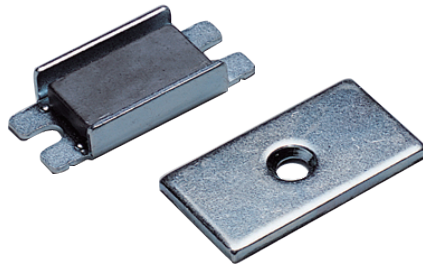


磁吸

Magnet catch



DK-088



商品介紹 Product description

- 1.貼附面與表面平行·便於組裝。
- 2.吸附力：1.5Kgf。

- 材質：冷軋鋼板(SPCC)
- 表面處理：鍍鋅
- 用途：測量儀器、辦公自動化設備、家具等

- 1.The attachment surface is parallel to the surface to facilitate assembly.
- 2.Adsorption : 1.5kgf.

- Material: Cold rolling steel sheet(SPCC)
- Finish: Zinc plating
- Uses: Measuring instrument,OA equipment, furniture,etc.

