

銅雙珠門檔



DK-2053

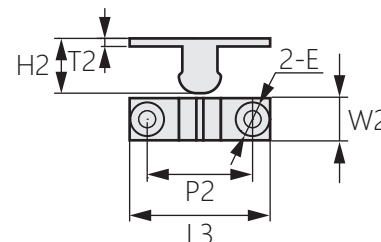
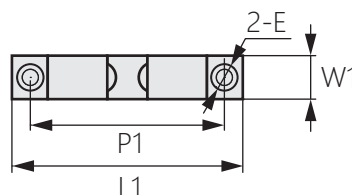
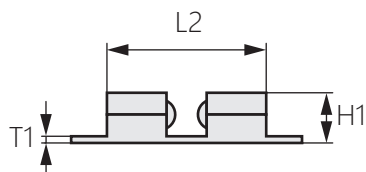
Copper double bead doorstop



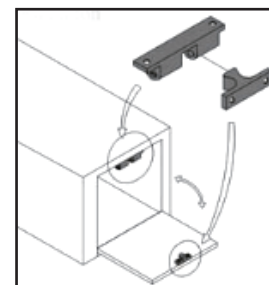
商品介紹 Product description

- 材質：銅
- 用途：車輛、船舶、通信設備等

- Material:Stainless steel SUS304 dewaxing casting
- Uses: Vehicles, ships, communication equipment,etc.



安裝示意圖



商品型號	L1	L2	L3	W1	W2	H1	H2	T1	T2	P1	P2	E	夾持 (KG)
DK-2053-1	40	24	24	7.6	6.8	10	10	1.8	2	32	15	3.4	1
DK-2053-2	44	27	26	8	6.8	10	10	2	2	35	15	3.4	1.5
DK-2053-3	49	31	29	9	7.8	10.8	10.8	2	2	40	19.7	3.8	2
DK-2053-4	60	36	35	11	9	13	13	2.2	2.2	50	24	4.6	2.5
DK-2053-5	69	47	40	13	11.5	15	15	2.2	2.2	58	30	4.8	5