

彈起式可調搭扣

Pop-up adjustable buckle



DK-618



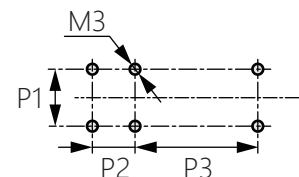
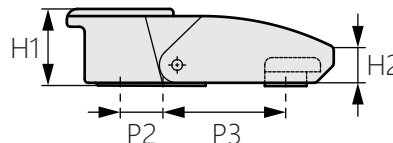
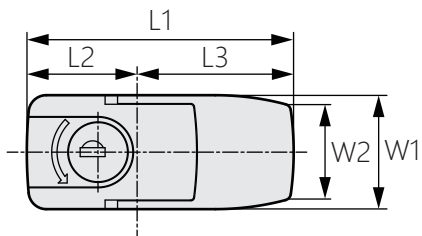
商品介紹 Product description

- 1.實現強力緊固。
- 2.緊固力：45kgf。
- 3.本產品為彈起式，安全性高。

- 材質：鋅合金
- 表面處理：絲絨鍍鉻
- 用途：半導體設備、配電盤等

1. Achieve strong fastening.
2. Fastening force: 45kgf.
3. This product is spring-up type and is highly secure.

- Material: Zinc alloy(ZDC)
- Finish: Velour chrome plating
- Uses: Semiconductor equipment, distributing panel, etc.



商品型號	L1	L2	L3	W1	W2	H1	H2	P1	P2	P3
DK-618-1	75	31	44	32	26.2	21.5	10	16	12	34.5
DK-618-2	64	26.5	37.5	27.5	22.3	19.4	8.5	12	12	29.5