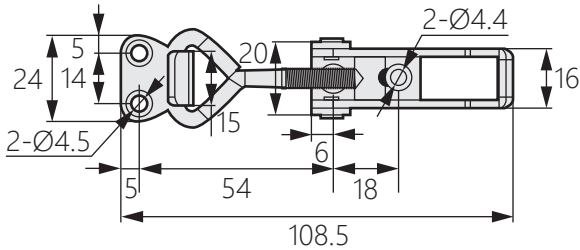


可調式迫緊搭扣

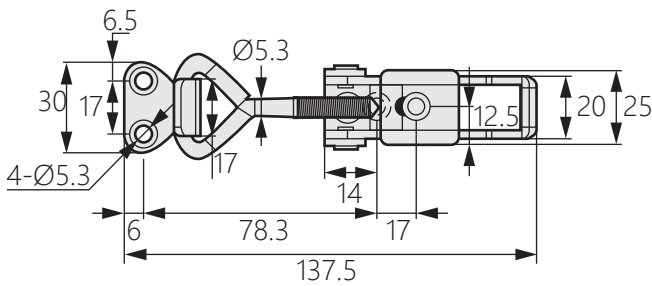
Adjustable squeeze buckle



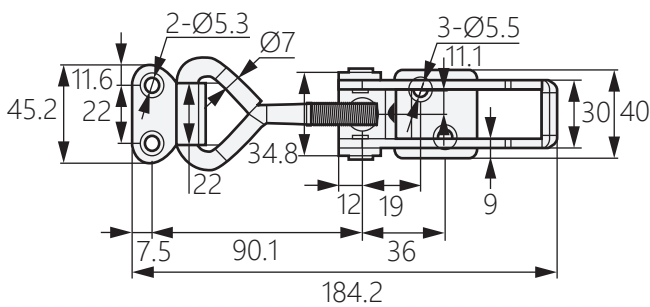
DK-8016



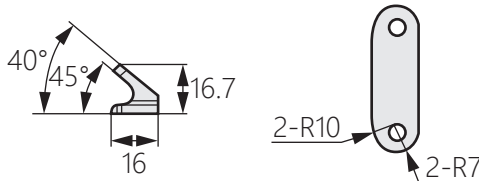
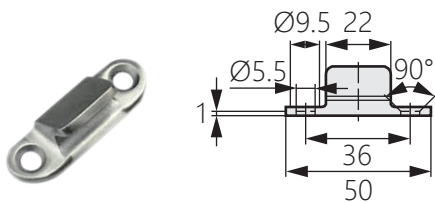
[DK-8016-1-1]、[DK-8016-2-1]



[DK-8016-1-2]、[DK-8016-2-2]



[DK-8016-1-3]、[DK-8016-2-3]



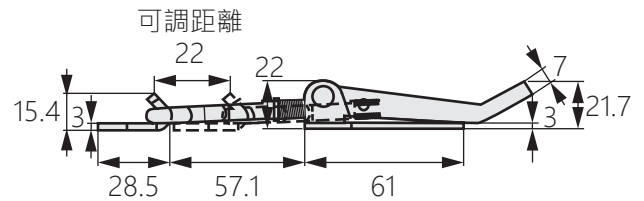
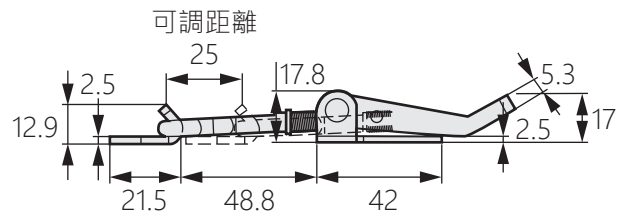
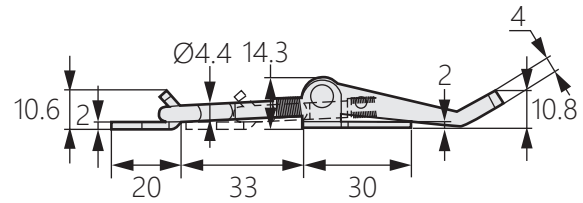
商品介紹 Product description

- 1.可安裝於側門或平門。
- 2.帶螺紋調節扣，迫緊強度可調節。

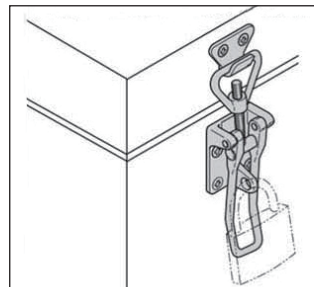
- 材質：鐵(SPCC)、不鏽鋼(SUS304)
- 表面處理：鍍鎳、震動研磨
- 用途：特殊車輛、機床、船舶等

1. Can be installed on side door or flat door.
2. With threaded adjustment buckle, the pressing strength can be adjusted.

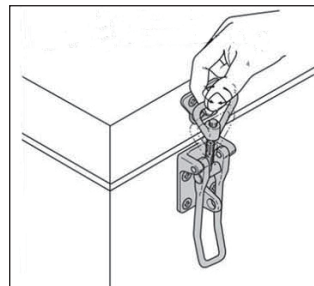
- Material: Iron(SPCC),stainless steel(SUS304)
- Finish: Nickel plating,vibration grinding
- Uses: Special vehicles,machine tools,ships,etc.



加掛鎖示意圖



調節示意圖



商品型號	材質
DK-8016-1-1	不鏽鋼
DK-8016-1-2	
DK-8016-1-3	
DK-8016-2-1	鐵
DK-8016-2-2	
DK-8016-2-3	