

# 水平調節輪



# GD-F=OWT&GD-S=OWT

## Level adjustment wheel

## 商品介紹 Product description



[ GD-F=OWT ]



[ GD-S=OWT ]

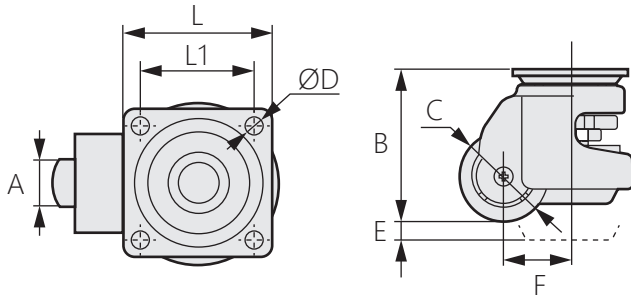
- 1.加厚鋼鐵烤漆。
- 2.一體鋁合金外殼。
- 3.加韌尼龍把手。
- 4.具有防磨耐滑TPR橡膠。

- 材質：TPR橡膠輪
- 表面處理：噴塗

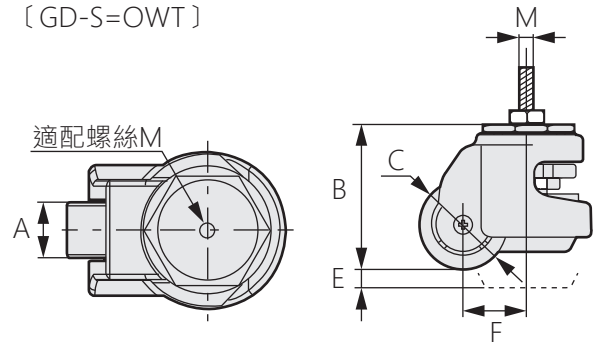
1. Thickened steel paint.
2. One-piece aluminum alloy shell.
3. Toughened nylon handle.
4. With anti-wear and slip-resistant TPR rubber.

- Material: TPR rubber wheels
- Finish: Spray

[ GD-F=OWT ]



[ GD-S=OWT ]



商品型號	轉動半徑	安裝高度	調節里程	頂板外徑	安裝孔距	孔徑	絲桿尺寸	四輪荷重 (KG)
GD-40-F=OWT	51	71	10	55*55	42*42	6.5	-	100
GD-60-F=OWT	63	82	10	73*73	58*58	7		500
GD-80-F=OWT	77	102	15	90*90	70*70	9		1000
GD-100-F=OWT	90	120	12	95*95		9		1500
GD-120-F=OWT	89	120	12	95*95		11		2000
GD-150-F=OWT	116	132	15	100*100	13	3000		
GD-40-S=OWT	51	71	10	-	-	-	M8*25	100
GD-60-S=OWT	63	82	10				M12*30	500
GD-80-S=OWT	77	102	15				M12*30	1000
GD-100-S=OWT	90	120	12				M16*40	1500
GD-120-S=OWT	89	120	12				M16*40	2000

商品型號	A	L	L1	D	M	B	C	E	F
GD-40-F=OWT	19	55	42	6.5	-	70	39	10	30
GD-60-F=OWT	25.5	73	58	6.5		82	50	10	38
GD-80-F=OWT	26.5	90	70	9.0		102	60.5	15	46
GD-100-F=OWT	29	95		9.0		120	72	12	53
GD-120-F=OWT	29	95		11		120	72	12	52
GD-150-F=OWT	54	100	13	135		91	15	69	
GD-40-S=OWT	19	-	-	-	M8*25mm	70	39	10	30
GD-60-S=OWT	25.5				M12*30mm	82	50	10	38
GD-80-S=OWT	26.5				M12*30	102	60.5	15	46
GD-100-S=OWT	29				M16*40	120	72	12	53
GD-120-S=OWT	29				M16*40mm	120	72	12	52