

水平調節腳座

Aluminum alloy universal foot



JZ-130



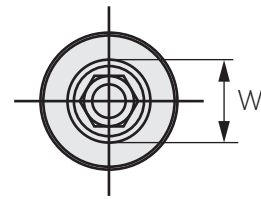
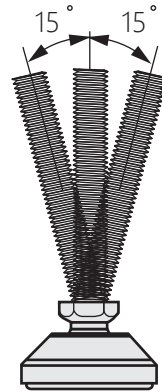
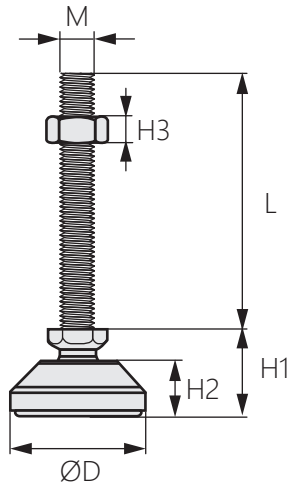
商品介紹 Product description

1. 採用尼龍材質的底座，質量輕、承重性能好。
2. 機械安裝時，地面傾斜自動導正水平，鬆緊度適中。

- 材質：螺桿-鐵、不鏽鋼
盤墊-橡膠(NBR)，耐油、耐鹼，耐熱130°C。
- 用途：半導體設備、醫療設備等

1. The base is made of nylon, which is light in weight and has good load-bearing performance.
2. During mechanical installation, the ground is inclined to automatically guide the level, and the tightness is moderate.

- Material: Screw-iron, stainless steel
Disk pad-rubber (NBR),oil-resistant,alkali-resistant , heat-resistant to 130°C.
- Uses: Semiconductor equipment,medical equipment,etc.



商品型號		M	L	ØD	H1	H2	H3	W	荷重 (KG)
鐵	不鏽鋼								
JZ-130-1-1	JZ-130-2-1	M8*P1.25	35	50	28	20	6.5	13	100
JZ-130-1-2	JZ-130-2-2		50						
JZ-130-1-3	JZ-130-2-3		75						
JZ-130-1-4	JZ-130-2-4	M10*P1.5	50	50	30	28	8	17	150
JZ-130-1-5	JZ-130-2-5		75						
JZ-130-1-6	JZ-130-2-6		100						
JZ-130-1-7	JZ-130-2-7	M12*P1.75	75	65	41	28	10	19	400
JZ-130-1-8	JZ-130-2-8		100						
JZ-130-1-9	JZ-130-2-9		150						
JZ-130-1-10	-	M16*P2.0	75	80	44	33	13	24	500
JZ-130-1-11	JZ-130-2-11		100						
JZ-130-1-12	JZ-130-2-12		150						
JZ-130-1-13	JZ-130-2-13	M20*P2.5	100	80	50	33	16	30	700
JZ-130-1-14	JZ-130-2-14		150						
JZ-130-1-15	JZ-130-2-15		200						
JZ-130-1-16	JZ-130-2-16	M20*P2.5	150	80	52	33	16	30	800
JZ-130-1-17	-		200						