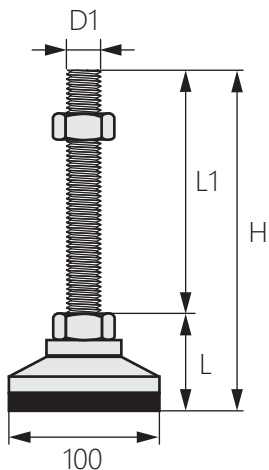
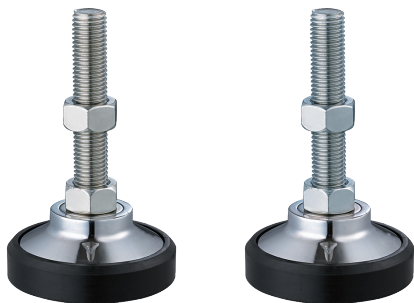


鋁合金重力型避震調整腳座

Aluminum Alloy Shock Absorber Base



JZ-1310



商品介紹 Product description

1. 鋁合金一體成型底座，可做鍍鉻處理。
2. 橡膠抗阻值 < 50Ω

- 材質：底座-鋁合金、螺絲-不鏽鋼、鍍鋅
- 備註：可訂製M24、M30、M36規格。

1. Aluminum alloy one-piece base, which can be chrome-plated.
2. Rubber resistance value < 50Ω

- Material: Base - aluminum alloy
Screws - stainless steel, galvanized
- Notes: M24, M30, M36 specifications can be customized.

商品型號	材質	L	D1	牙距	L1	H	荷重 (KG)
JZ-1310-1-1	不鏽鋼	48	M16	P2.0	100	156	1000
JZ-1310-1-2		48	M16	P2.0	150	206	1000
JZ-1310-1-3		51	M20	P2.5	100	159	1500
JZ-1310-1-4		51	M20	P2.5	150	209	1500
JZ-1310-2-1	鍍鋅	48	M16	P2.0	100	156	1000
JZ-1310-2-2		48	M16	P2.0	150	206	1000
JZ-1310-2-3		48	M16	P2.0	200	256	1000
JZ-1310-2-4		51	M20	P2.5	100	159	1500
JZ-1310-2-5		51	M20	P2.5	150	209	1500
JZ-1310-2-6		51	M20	P2.5	200	259	1500