

螺絲固定型鋼珠滾輪(樹脂主體)



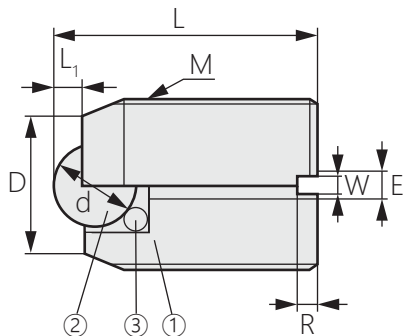
LZ-411

Screw-fixed steel ball roller (resin body)

商品介紹 Product description

易安裝 · 好調整 · 用於定位及鎖定功能。

Easy to install, easy to adjust, for positioning and locking functions.



商品型號	M	L	L1	D	d	E	W	R	耐負載(N)
LZ-411-1	8	14	1.5	6	4.76	1.5	1.2	1.5	2
LZ-411-2	10	16	1.7	8	5.56	2.5	1.5	2	4
LZ-411-3	16	25	2.8	12	8.73	3	2	3	7
LZ-411-4	20	30	3.5	14	10.32	3.5	3	4	11