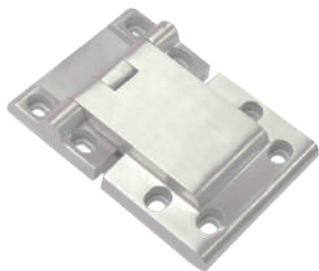


# 不鏽鋼鉸鏈



# OH-0336

## Stainless steel hinge



## 商品介紹 Product description

- 1.左右兼用型。
- 2.最大開啟角度180度。

- 材質：不鏽鋼SUS201
- 表面處理：拉絲拋光
- 用途：蒸氣櫃、櫥櫃、工業烤箱等

1. Both left and right use type.
2. The maximum opening angle is 180 degrees.

- Material: Stainless steel SUS201
- Finish: Brushed and polished
- Uses: Steam cabinets, cabinets, industrial ovens, etc.

