

不鏽鋼重型鉸鏈



OH-1445

Stainless steel heavy hinge



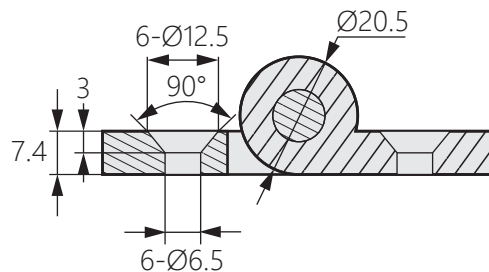
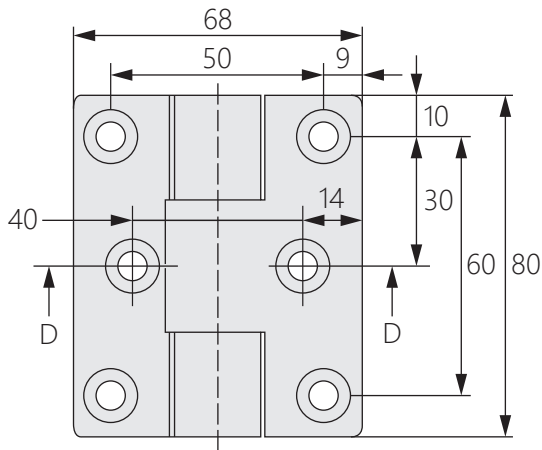
商品介紹 Product description

- 1.最大開啟角度180度。
- 2.全不鏽鋼實心鑄造，承重性強。
- 3.左右兼用型。

- 材質：不鏽鋼(SUS304)
- 表面處理：鏡面拋光
- 用途：特種車輛、工業箱體等

1. The maximum opening angle is 180 degrees.
2. All stainless steel solid casting, strong load-bearing.
3. Both left and right use type.

- Material: Stainless steel(SUS304)
- Finish: Mirror polishing
- Uses: Special vehicles, industrial boxes, etc.



〔截面 D-D〕