

不鏽鋼機械設備鉸鏈



OH-2031

Stainless steel mechanical equipment hinges

商品介紹 Product description

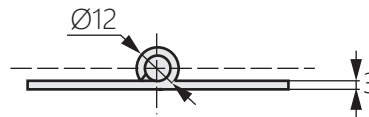
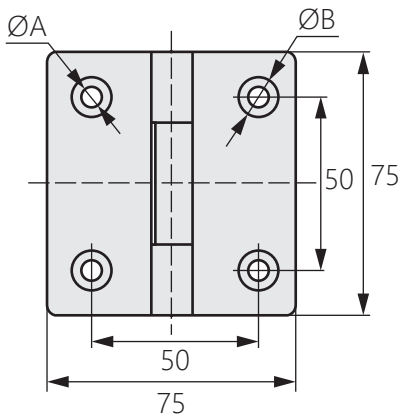


1. 旋轉角度0-180度。
2. 最大靜載荷：60KG。

- 材質：不鏽鋼(SUS304.316)
- 表面處理：鏡光、拉絲
- 用途：交通車輛、工業設備等

1. Rotation angle 0-180 degrees.
2. Maximum static load: 60KG.

- Material: Stainless steel(SUS304.316)
- Finish: Mirror light,wire drawing
- Uses: Transportation vehicles,industrial equipment,etc.



商品型號	A	B
OH-2031-1	4-Ø6.5	4-Ø11.5
OH-2031-2	6-Ø6.5	6-Ø11.5
OH-2031-3	6-Ø6.5	