

不鏽鋼鉸鏈



OH-2149

Stainless steel hinge



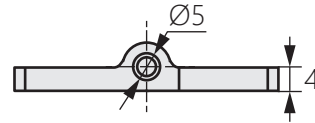
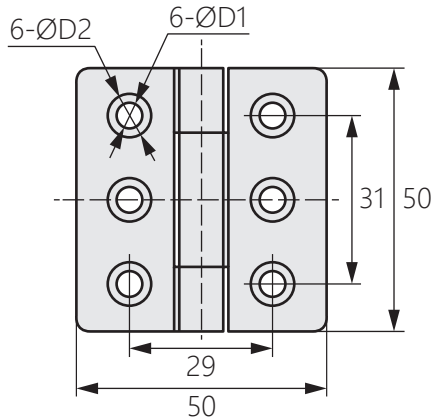
商品介紹 Product description

- 1.旋轉角度：0-180度。
- 2.最大靜載荷：80KG。

- 材質：不鏽鋼(SUS304.316)
- 表面處理：鏡光、拉絲
- 用途：交通車輛、工業設備等

1. Rotation angle: 0-180 degrees.
2. Maximum static load: 80KG.

- Material: Stainless steel(SUS304.316)
- Finish: Mirror light,wire drawing
- Uses: Transportation vehicles,industrial equipment,etc.



商品型號	D1	D2
OH-2149-1	4.5	8.5
OH-2149-2	6.5	12