

# 重承載型不鏽鋼鉸鏈



# OH-227

## Heavy duty stainless steel hinge



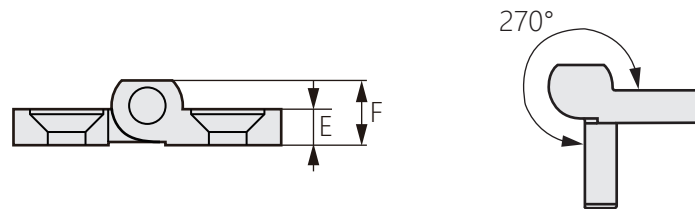
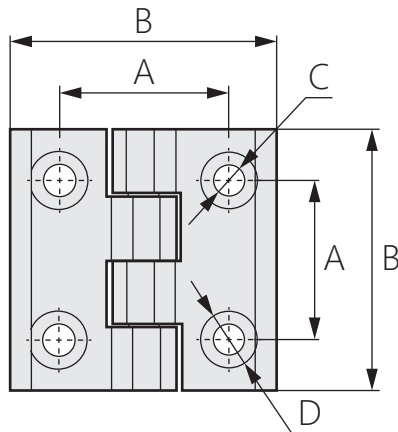
### 商品介紹 Product description

1. 結構穩固・簡易安裝。
2. 出色的耐久性以及抗腐蝕能力。

- 材質：不鏽鋼SUS304
- 表面處理：髮絲紋拋光、黑色塗裝
- 用途：自動化設備、機箱機櫃等

1. Stable structure and easy to install.
2. Excellent durability and corrosion resistance.

- Material: Stainless steel SUS304
- Finish: Hairline polishing, black painting.
- Uses: Automation equipment, chassis cabinets, etc.



| 商品型號       |            | A  | B  | C   | D    | E | F    | 荷重 (KG) |
|------------|------------|----|----|-----|------|---|------|---------|
| 拋光         | 黑色         |    |    |     |      |   |      |         |
| OH-227-1-1 | OH-227-1-2 | 36 | 60 | 8.4 | 16.5 | 8 | 14.5 | 60      |
| OH-227-2-1 | OH-227-2-2 | 30 | 50 | 6.3 | 12.3 | 6 | 12   | 40      |
| OH-227-3-1 | OH-227-3-2 | 25 | 40 | 5.2 | 10.2 | 5 | 9.7  | 30      |