

鋅合金外露式鉸鏈

Zinc alloy exposed hinge



OH-228



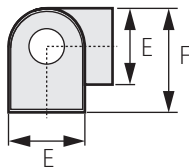
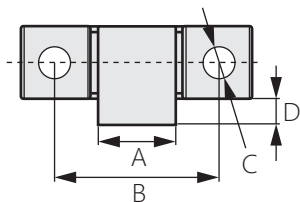
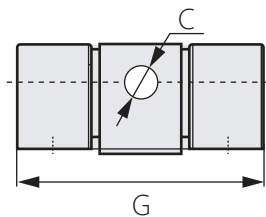
商品介紹 Product description

安裝時，從螺絲板內安裝。

- 材質：鋅合金
- 表面處理：無光黑、鍍亮鉻
- 用途：電箱、服務機器機櫃、小型機櫃

When installing, install from the screw plate.

- Material: Zinc alloy
- Finish: Matt black、bright chrome
- Uses: Electric box, service machine cabinet, small cabinet.



商品型號	表面處理	A	B	C	D	E	F	G
OH-228-1	無光黑	20	43	6	5	16	22	63
OH-228-2		15	32			14	19	45
OH-228-3	鍍亮鉻	20	43			16	22	63
OH-228-4		15	32			14	19	45