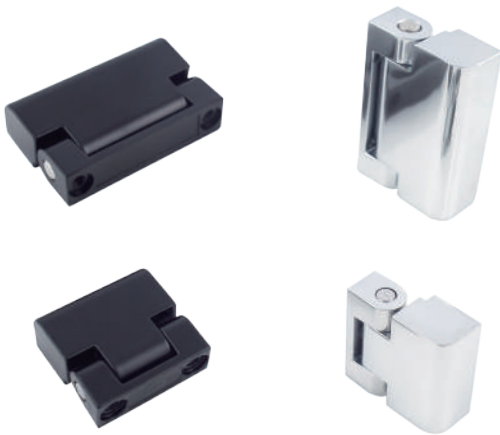


Exposed hinge

商品介紹 Product description

- 1.大小邊設計，適合平門和門板整體。
- 2.安裝時，螺絲從板內外裝。



- 材質：鋅合金、不鏽鋼(SUS202.304.316)
- 表面處理：黑色塗裝、亞光鉻、鏡光
- 用途：機箱機櫃、網路機櫃、自動化設備

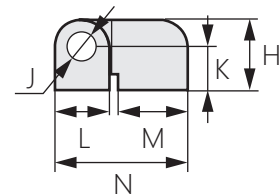
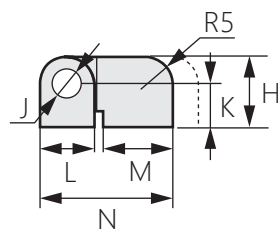
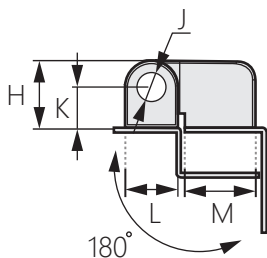
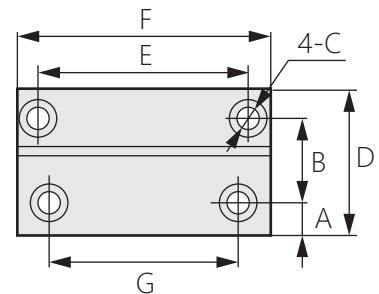
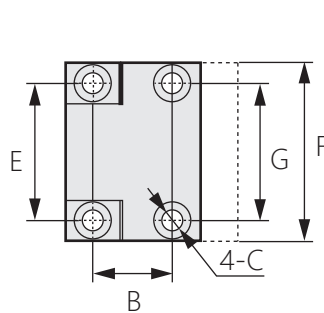
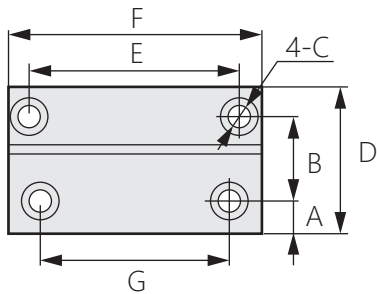
1. The large and small side design is suitable for flat doors and door panels as a whole.
2. When installing, the screws are installed from the inside and outside of the board.

- Material: Zinc alloy
Stainless steel(SUS202.304.316)
- Finish: Black painting, matt chrome, mirror light
- Uses: Cabinets, network enclosures, automation equipment.

[OH-229-1]
[OH-229-2]
[OH-229-3]
[OH-229-4]

[OH-229-5]
[OH-229-6]

[OH-229-7]



商品型號	材質	顏色	A	B	C	D	E	F	G	H	J	K	L	M	N	
OH-229-1	鋅合金	黑色	8	20	M5	35	50	60	45	18	8	11	14	18	-	
OH-229-2		亞光鉻														
OH-229-3		黑色	4	18.5	M4	27.5	22	30	22	13	5	8	10	14.5		
OH-229-4		亞光鉻														
OH-229-5		黑色	-	12.5	-	-	-	-	-	-	-	-	-	9		22
OH-229-6		黑色	-	18.5	-	-	-	-	-	-	-	-	-	15.5		28.5
OH-229-7	不鏽鋼	鏡光	8	20	M5	35	50	60	45	18	8	11	14	18	35	