

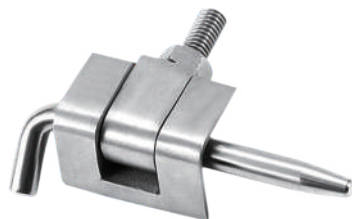
內藏式折疊不鏽鋼鉸鏈



OH-3031

Built-in folding stainless steel hinge

商品介紹 Product description



- 1.旋轉角度：0-180度。
- 2.最大靜載荷：60KG。

- 材質：不鏽鋼(SUS304.316)
- 表面處理：鏡光、拉絲
- 用途：不鏽鋼機櫃內門

1. Rotation angle: 0-180 degrees.
2. Maximum static load: 60KG.

- Material: Stainless steel(SUS304.316)
- Finish: Mirror light,wire drawing
- Uses: Stainless steel cabinet inner door.

