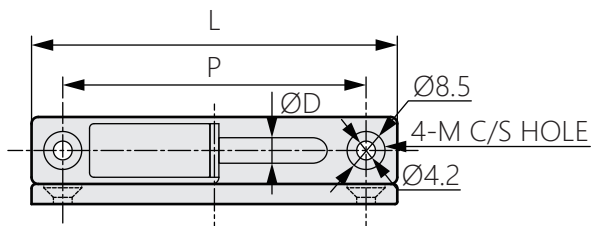
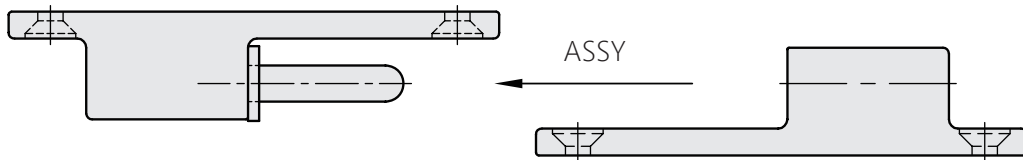
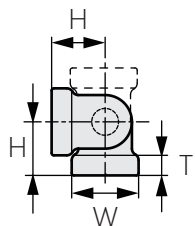


# 快拆式鉸鍊

## Quick release hinge



# OH-336



### 商品介紹 Product description

左右兼用型。

- 材質：鋅合金(ZDC)
- 表面處理：鍍鉻
- 用途：機床、工業機械等

Use in both of right and left.

- Material: Zinc alloy(ZDC)
- Finish: Chrome plating
- Uses: Machine tools, industrial machinery, etc.

商品型號	L	H	P	ØD	W	T	M	負荷(kgf)
OH-336-1	82	12	68	6	15	4.5	4	10
OH-336-2	61	10	48	5	13	3.5		8
OH-336-3	51	8	40	4	11	2.5	3	4
OH-336-4	35	6	27	3	8	2		