

鋅合金止動鉸鏈

Zinc alloy stop hinge



OH-337



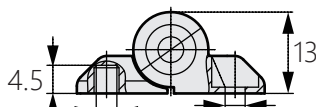
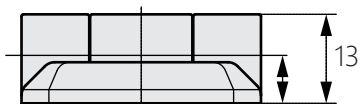
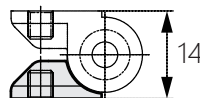
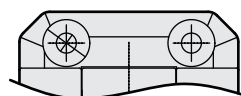
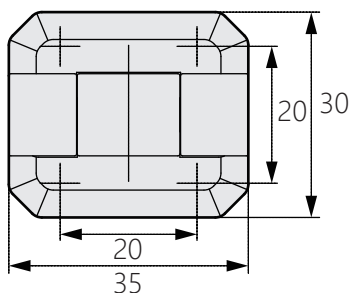
商品介紹 Product description

- 1.僅在恆定壓力(扭矩) 下旋轉。
- 2.允許負載：1-24kgf
OH-337-S：5-8kgf·cm
OH-337(H)：13-18kgf·cm

- 材質：鋅合金(ZDC)
- 表面處理：鍍鉻、黑色噴漆
- 用途：IT設備、配電盤等

- 1.Rotate only at constant pressure(Torque).
- 2.Allowable Load：1~24kgf
OH-337-S：5~8kgf·cm
OH-337(H)：13~18kgf·cm

- Material: Zinc alloy(ZDC)
- Finish: Chrome plating,black painting
- Uses: IT equipment,switchboards,etc.



4-M3/M4

4-Ø3.2hole C/B Ø7.5

4-Ø4.2hole C/B Ø7.5

[OH-337]

[OH-337-H]

商品型號	表面顏色	扭矩(kgf·cm)
OH-337-1	黑色	13~18
OH-337-2	象牙色	
OH-337-H-3	銀色	5~18
OH-337-H-4		
OH-337-S-3		
OH-337-S-4		