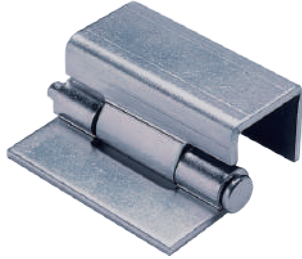


# 隱藏鉸鏈

## Internal hinge



OH-354



### 商品介紹 Product description

可分離軸易於安裝。

- 材質：冷軋鋼板(SPCC)
- 表面處理：鍍鋅
- 用途：IT設備、機床、工業機械等

Easy to mount due to separable shaft.

- Material: Cold rolling steel sheet(SPCC)
- Finish: Zinc plating
- Uses: It equipment, machine tool, industrial machinery, etc.

