

不鏽鋼重承載型鉸鍊



OH-737

Heavy duty stainless steel butt hinge



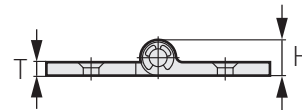
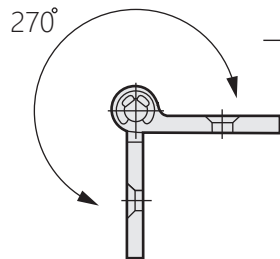
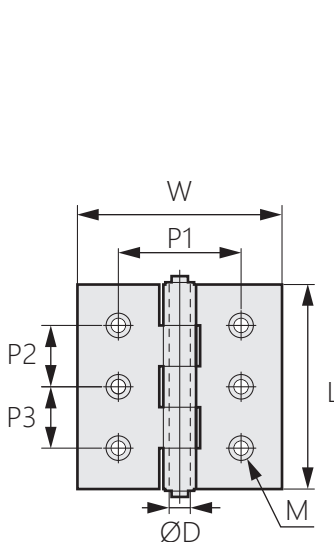
商品介紹 Product description

1. 脫蠟鑄造，具有極密間隙，沙拉孔設計。
2. 良好的耐久性及抗腐蝕能力。

- 材質：不鏽鋼SUS304
- 表面處理：鏡面拋光
- 用途：車輛、機械設備、廚房設備等

1. Dewaxing casting, with extremely close clearance, salad hole design.
2. Good durability and corrosion resistance.

- Material: Stainless steel SUS304
- Finish: Mirror polishing
- Uses: Vehicles, mechanical equipment, kitchen equipment, etc.



商品型號	ØD	H	L	W	P1	P2	P3	T	M	荷重 (KG)
OH-737-1	8	16	100	100	60	30	30	6	M6	90
OH-737-2	8	16	75	75	50	40	-	6	M6	70
OH-737-3	6	14	65	65	40	35	-	5	M5	50
OH-737-4	6	14	50	50	30	20	-	5	M5	40