

# 弓形拉手

Bow handle



TG-739



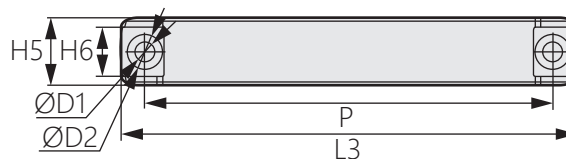
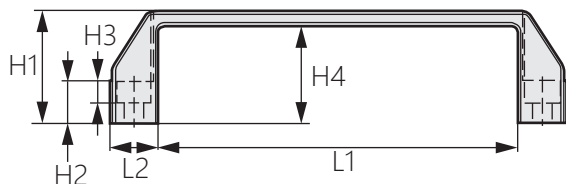
商品介紹 Product description

接手强度高·韌性好·安裝簡便。

- 材質：鋁合金、塑料
- 表面處理：黑色烤漆
- 用途：烤箱、試驗箱、自動化設備等

It has high strength, good toughness and easy installation.

- Material: Aluminum alloy, Plastic
- Finish: Black painting
- Uses: Ovens, test chambers, automation equipment, etc.



商品型號	材質	L1	L2	L3	P	H1	H2	H3	H4	H5	H6	D1	D2
TG-739-1-1	鋁合金	72.5	17	106.5	90	36	12	6.5	30	19.5	13	6.5	12.5
TG-739-2-1		96	22	140	120	41	15.5	9	33	24	18	8.5	14
TG-739-3-1		159	20.5	200	180	49	18.5	9.5	42	28.5	19		15
TG-739-1-2	塑膠	68	19	106	88	37	12	6.5	30	20.5	13	6.8	11
TG-739-2-2		97	21.5	140	120	40.5	15.5	8.5	33	25.5	17.5	8.5	13.8
TG-739-3-2		154	23	200	180	51.5	18	9.5	42.5	28.5	19.5		13.5