

鋅合金嵌式把手

Zinc alloy embedded handle



TG-800



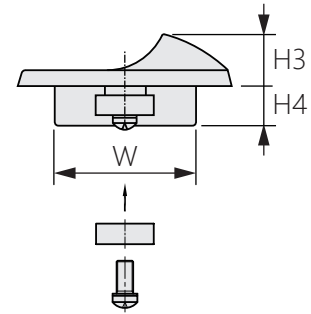
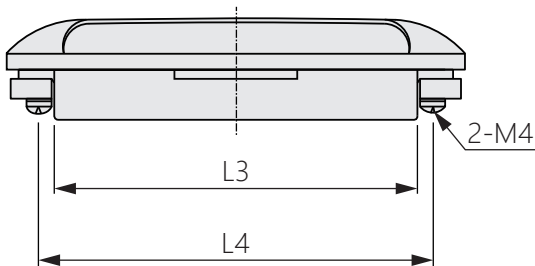
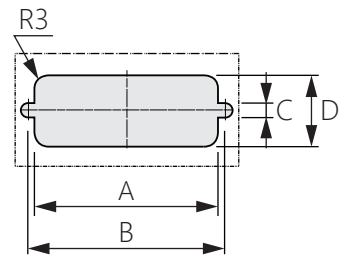
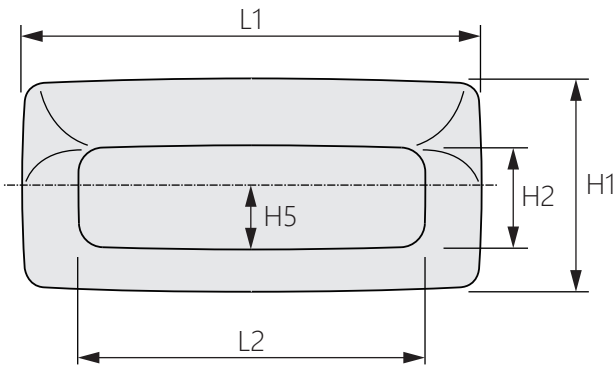
商品介紹 Product description

嵌式安裝，表面突起少。

- 材質：鋅合金(ZDC)
- 表面處理：TG-800-1系列：鍍鉻(六價鉻)
TG-800-2系列：鍍鉻(三價鉻)
- 用途：半導體設備、工業機械等

Embedded installation, less surface protrusions.

- Material: Zinc alloy(ZDC)
- Finish: TG-800-1 series: Hexavalent (Chrome)
TG-800-2 series: Hexavalent (Chromium)
- Uses: Semiconductor equipment, industrial machinery, etc.



商品型號	L1	L2	L3	L4	H1	H2	H3	H4	H5	W	A	B	C	D
TG-800-1-1	142	110	115	126	65	34	12.5	11	22.5	49	116	126	7	50
TG-800-2-1														
TG-800-1-2	112	84	88	96	52	25	9.5	15.5	33.5	89	96	35		
TG-800-2-2														
TG-800-1-3	92	63	66	78	25	21	11	8.5	13.5	29	67	78	30	
TG-800-2-3														

安裝示意圖

