

# 圓頭鎖



## TM-0815

Cam lock

商品介紹 Product description

左右兼用型·鎖芯可在開啟和關閉的狀態下鎖定·具方便旋轉操作的橫向凸出結構設計。



[ TM-0815-1 ]



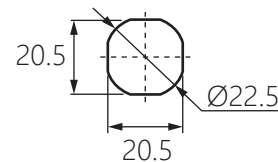
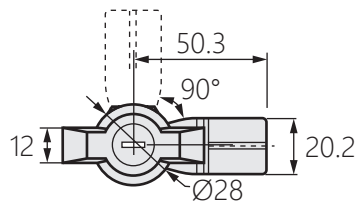
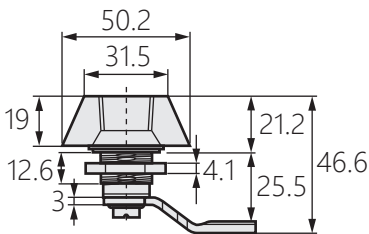
[ TM-0815-2 ]

- 材質：鋅合金(ZDC)
- 表面處理：黑色烤漆
- 用途：控制箱、電力箱、網絡機櫃

Left and right dual-use type, the lock cylinder can be locked in the open and closed state, with the laterally protruding structure design is convenient for rotating operation.

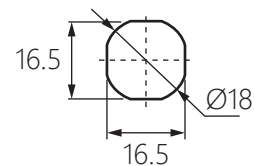
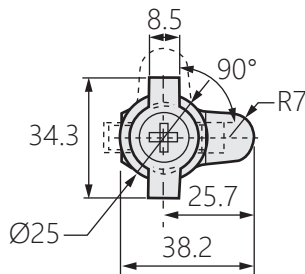
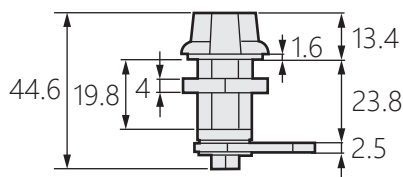
- Material: Zinc alloy(ZDC)
- Finish: Black paint
- Uses: Control box, power box, network cabinet.

[ TM-0815-1 ]



開孔尺寸

[ TM-0815-2 ]



開孔尺寸