

圓頭鎖

Cam lock



TM-1004



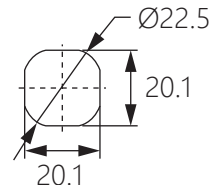
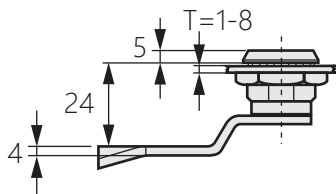
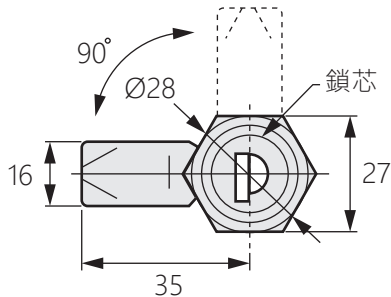
商品介紹 Product description

- 1.具防塵、防水功能。
- 2.體積小巧，易安裝於空間較小的門板上。

- 材質：鋅合金、冷軋鋼板
- 表面處理：鍍亮鉻、黑色烤漆
- 用途：小型櫃門、信箱、電箱櫃

1. It is dustproof and waterproof.
2. Small size, easy to install on the door panel with small space.

- Material: Zinc alloy(ZDC) 、Cold rolled steel sheet
- Finish: Bright chrome plated 、Black painting
- Uses: Small cabinet doors, mailboxes, electric cabinets.



開孔尺寸