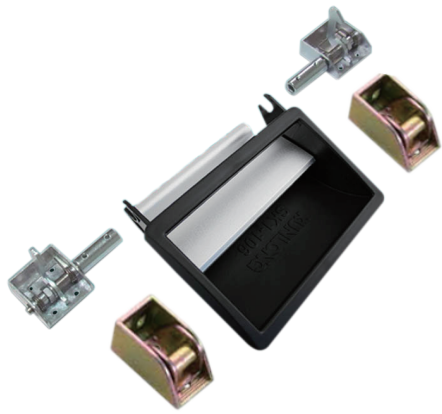


Panel lock

商品介紹 Product description

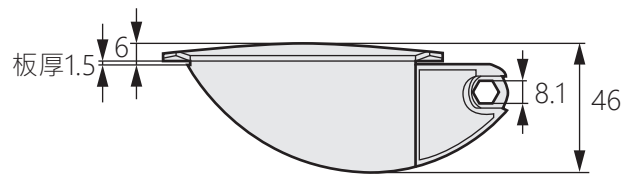
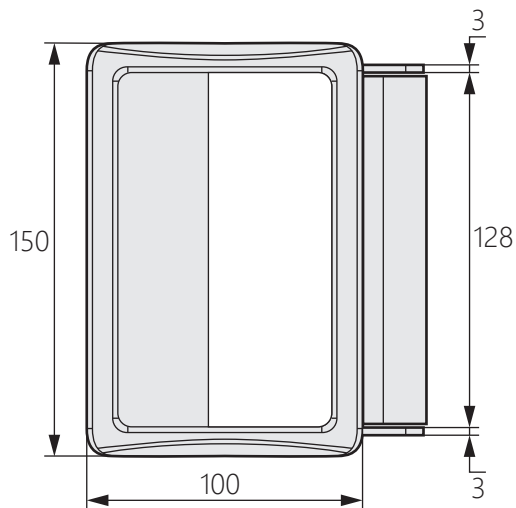
- 1.關閉時，推動門可自行碰撞鎖住。
- 2.須自配六角連桿。



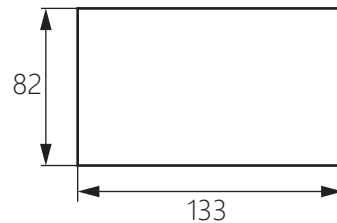
- 材質：座子/鉤鎖-鋅合金、把手框-塑膠PA
把手-鋁擠型
- 表面處理：座子/鉤鎖-鍍彩鋅、把手框-黑色
把手-噴80號砂
- 用途：烤箱、試驗箱等

1. When it is closed, the door can be locked by self-collision by pushing it.
2. Must be equipped with hexagonal connecting rod.

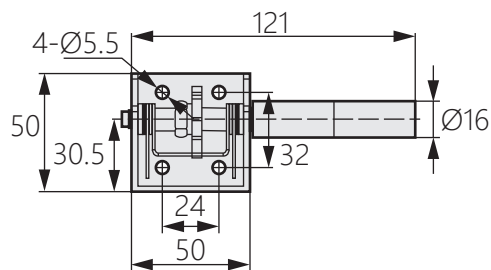
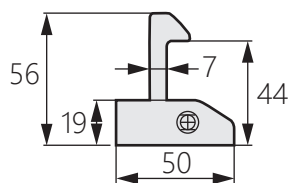
- Material: Seat/Hook lock-Zinc alloy
Handle frame-Plastic PA
Handle-Aluminum Extrusion Type
- Finish: Seat/Hook lock-Color-plated zinc
Handle frame-Black
Handle-No. 80 sand spray
- Uses: Oven, test box, etc.



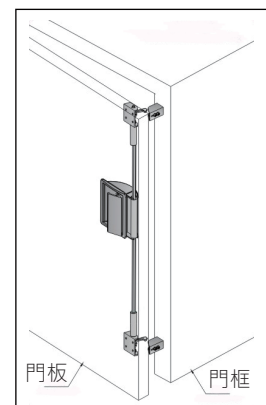
開孔尺寸



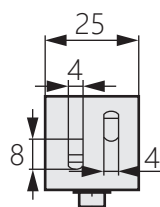
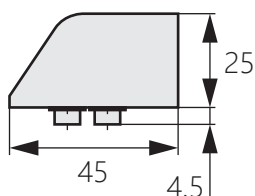
鉤鎖



安裝示意圖



鉤座



品名	內含數量
鉤座	2
鉤鎖	2