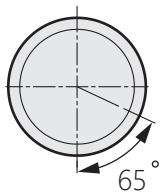


按壓式平面把手

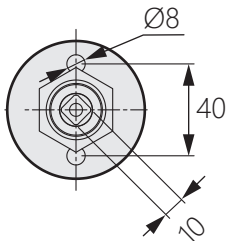


TM-2172

Pressed flat handle



迴轉角度65°



商品介紹 Product description

- 材質：不鏽鋼316脫臘鑄造
- 表面處理：鏡面拋光
- 用途：配電盤、制御盤部品

- Material: Stainless steel 316 dewaxing casting
- Finish: Mirror polishing
- Uses: Switchboard, control disc parts.

