

戶外機櫃鎖

Outdoor cabinet lock



TM-224



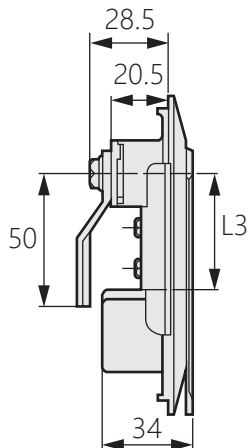
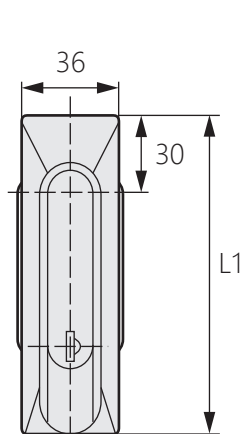
商品介紹 Product description

1. 調換鎖片位置，可左右開門兼用。
2. 預留天地鎖改裝功能。

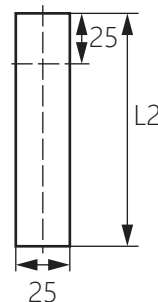
- 材質：鋅合金、PA-6
- 表面處理：黑色噴砂、塑膠黑色
- 用途：配電箱、控制櫃、機箱機櫃。

1. Change the position of the lock plate, and it can be used for both left and right door opening.
2. Reserve the world lock modification function.

- Material: Zinc alloy(ZDC)、PA-6
- Finish: Black sandblasted、plastic black
- Uses: Distribution boxes, control cabinets, chassis cabinets.



開孔尺寸



商品型號	L1	L2	L3
TM-224-1	160	150	84.5
TM-224-2	120	110	44