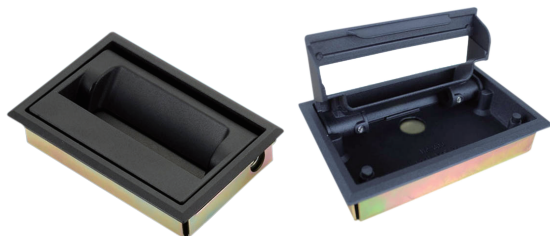


# 橫式把手鎖

Horizontal handle lock



TM-270



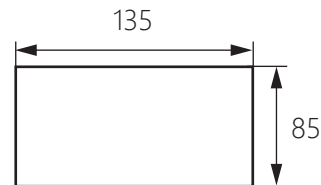
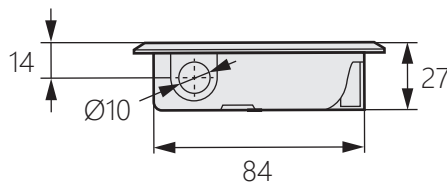
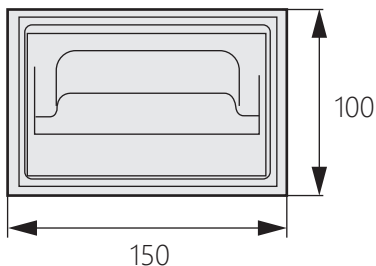
商品介紹 Product description

1. 具有壓縮迫緊功能。
2. 左右開門兼用。

- 材質：鋅合金(ZDC)
- 表面處理：黑沙面
- 用途：烤箱、試驗箱、密封性能好的箱體
- 備註：需自配8mm六角棒，與其他配件配套使用。

1. With compression function.
2. Open the door on both sides.

- Material: Zinc alloy(ZDC)
- Finish: Black sand surface
- Uses: Oven, test chamber, cabinet with good sealing performance.
- Notes: It needs to be equipped with 8mm hexagonal rods and used with other accessories.



開孔尺寸