

Snatch lock type handle

〔TM-529-1〕 碰鎖式



〔TM-529-2〕 反碰鎖式



商品介紹 Product description

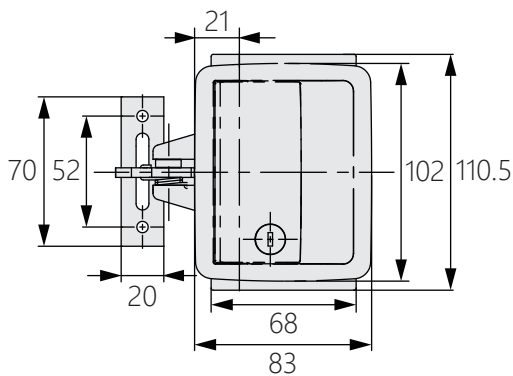
1. 一鍵式開合。
2. 防塵、防震效果佳。
3. 適用板厚：0.6-1.5mm。

- 材質：主框架-鋅合金 (ZDC) / 支架-冷軋鋼板 (SCP)
- 表面處理：主框架-鍍鉻 / 支架-鍍鋅 (MFZn)
- 用途：特種車輛、工程機械等

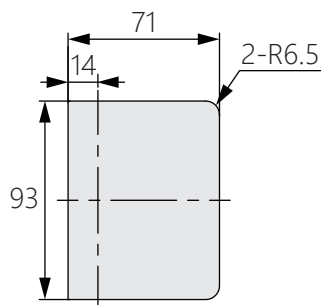
1. One-button opening and closing.
2. Good dustproof and shockproof effect.
3. Applicable plate thickness: 0.6-1.5mm.

- Material: Main frame-Zinc alloy (ZDC) / Bracket-Cold rolling steel sheet(SCP)
- Finish: Main Frame-Satellite chrome plating/ Bracket-Zinc plating(MFZn)
- Uses: Industrial panels, test instruments, etc.

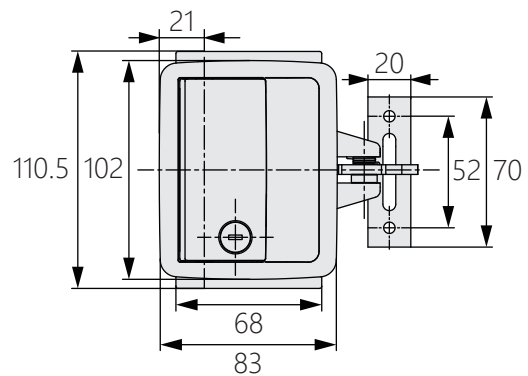
〔TM-529-1〕



面板鑽孔尺寸



〔TM-529-2〕



面板鑽孔尺寸

