

Stainless snap latch lock



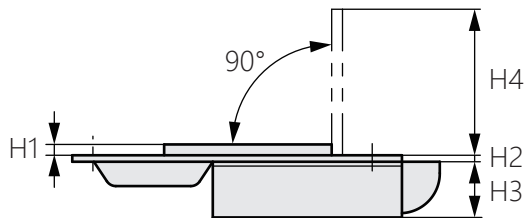
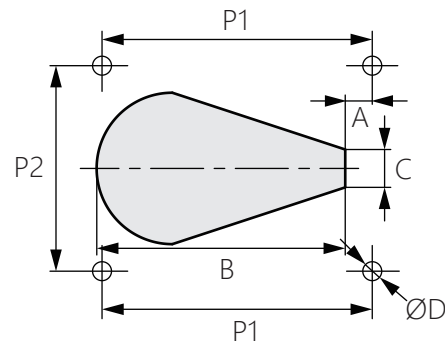
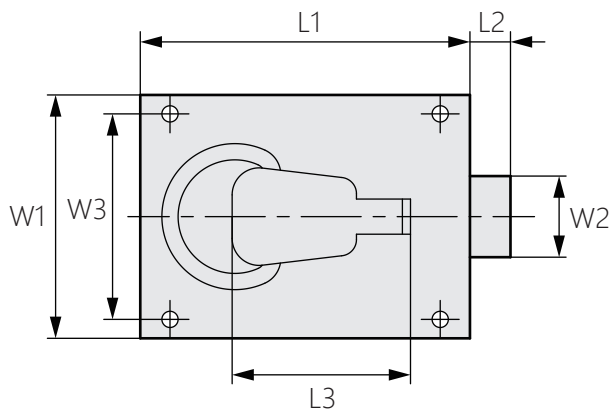
商品介紹 Product description

本產品最大限度地減少了突起，便於在小範圍內使用。

- 材質：主體-不銹鋼 (SUS304)、鎖扣-黃銅 (BsBM)
- 表面處理：髮絲拋光
- 用途：半導體設備、IT 設備等

This item is minimize protrusions for easy use in small areas.

- Material: Main-Stainless(SUS304)  
Latch-BsBM
- Finish: Hairline polishing
- Uses: Semiconductor equipment, IT equipment.



商品型號	L1	L2	L3	W1	W2	W3	H1	H2	H3	H4	P1	P2	R	A	B	C	ØD
TM-601-1	61	7	33	45	15	18	2	1.2	10.5	27	50	38	14	5.5	46	7	3.5
TM-601-2	55	5.5	33	32	11.5	16			6.8	26.5	45	24	13	2	45	7	3.5
TM-601-3	45	4.5	26.5	26	10	13			6.8	21	37	20	9.5	3	36	11	3
TM-601-4	38	3.5	22	22	8	10.1			6.3	16.5	33	17.5	8.5	2	31	6	2.5
TM-601-5	30	3	18	17	6	9			5.3	12.5	25	13	6	1.5	24	6	2
TM-601-6	26	2.5	14	13	5	7			1.2	0.8	5.2	9.5	23	10	5	2.5	20