

Inter lock



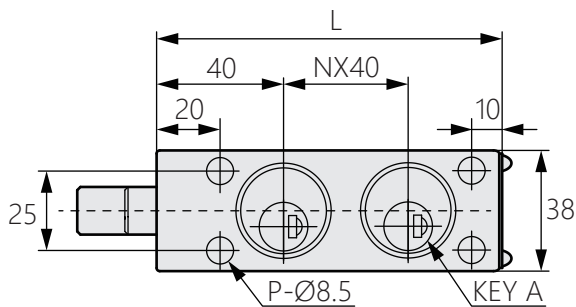
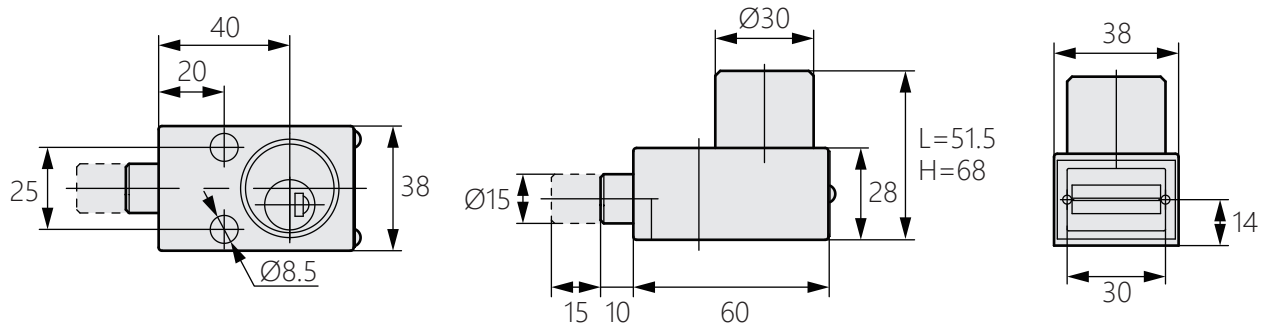
商品介紹 Product description

- 1.卓越的安全性。
- 2.鑰匙可以互鎖。
- 3.抗震結構。

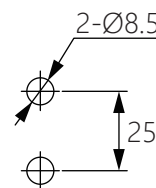
- 材質：鋅合金(ZDC)、黃銅( Brass)
- 表面處理：鍍鉻
- 用途：進線盤、配線盤、機床、廠房等。

- 1.Excellent security.
- 2.Key interlocking mechanism.
- 3.Vibration resistant structure.

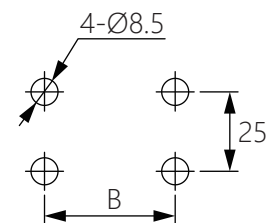
- Material: ZDC, Brass
- Finish: MZCr, MBCr
- Uses: Incoming panel, distributing panel, machine tool, plant, etc.



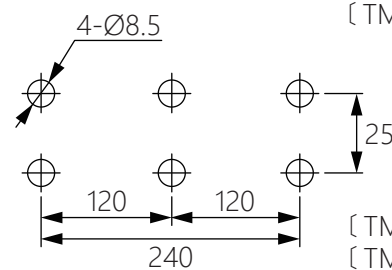
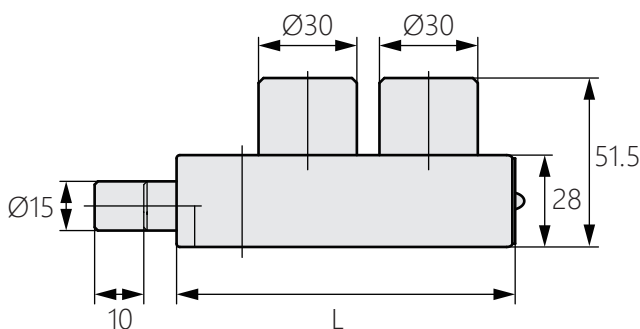
開孔尺寸



[ TM-626-1L ]  
[ TM-626-1H ]



[ TM-626-2L/2H ]  
[ TM-626-3L/3H ]  
[ TM-626-4L/4H ]  
[ TM-626-5L/5H ]



[ TM-626-6L ]  
[ TM-626-6H ]

商品型號	材質	A	N	L	P	B	商品型號	材質	A	N	L	P	B
TM-626-1L	鋅合金	1	-	60	2	-	TM-626-4L	黃銅	4	3	190	4	160
TM-626-1H		1	-	60	2	-	TM-626-4H		4	3	190	4	160
TM-626-2L		2	1	110	4	80	TM-626-5L		5	4	230	4	200
TM-626-2H		2	1	110	4	80	TM-626-5H		5	4	230	4	200
TM-626-3L	黃銅	3	2	150	4	120	TM-626-6L	6	5	270	6	-	
TM-626-3H		3	2	150	4	120	TM-626-6H	6	5	270	6	-	