

反向互鎖式開關



TM-627

Reverse inter lock

商品介紹 Product description

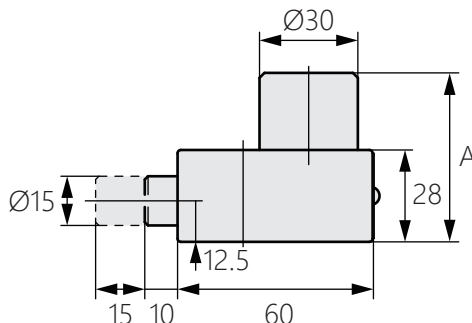
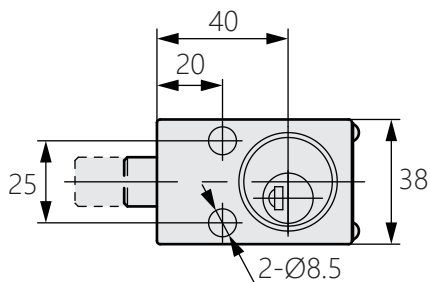


抗震結構。

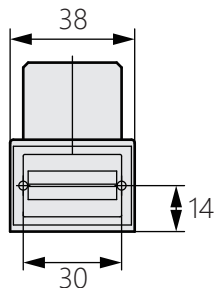
- 材質：鋅合金(ZDC)
- 表面處理：鍍鉻
- 用途：進線盤、配線盤、機床、廠房等。

Earthquake-resistant structure.

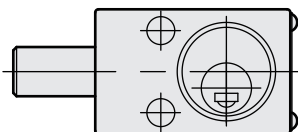
- Material: Zinc alloy(ZDC)
- Finish: MZCr
- Uses: Incoming panel, distributing panel, machine tool, plant, etc.



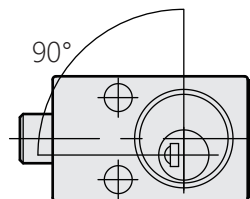
商品型號	A
TM-627-L	51.5
TM-627-H	68



[TM-627-L]

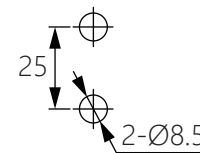


關閉 (鑰匙無法移除)



打開 (鑰匙可以拔出)

[TM-627-H]



面板鑽孔尺寸