

按壓式圓鎖

Push to close latch



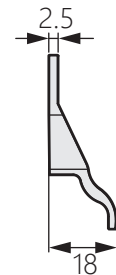
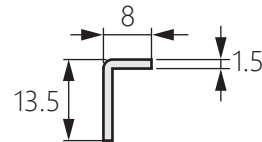
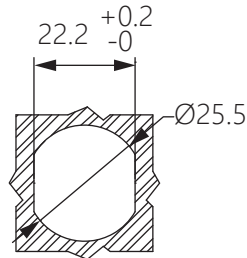
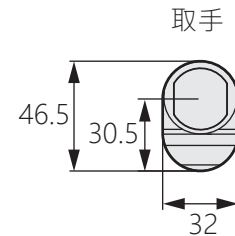
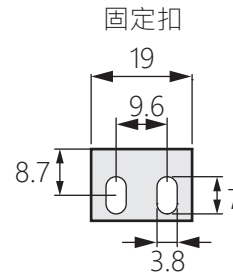
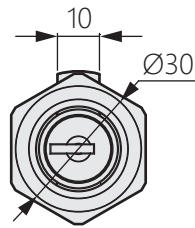
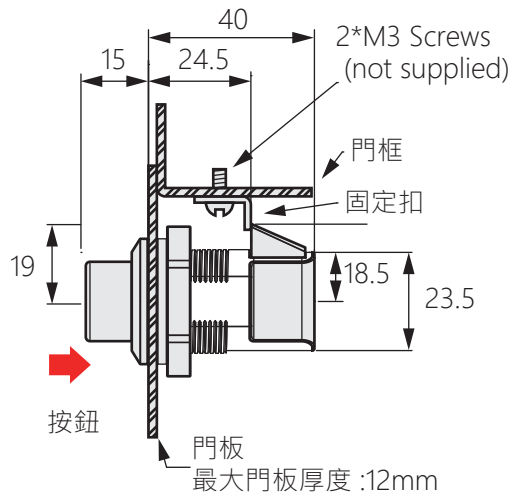
商品介紹 Product description

按壓按鈕開啟門板，門板回推自動關閉。

- 材質：尼龍
- 用途：置物櫃、通信設備、機櫃等
- 備註：固定扣與取手為標準配件

Press the button to open the door, and the door will automatically close by pushing back.

- Material: Nylon
- Uses: Locker, communications equipment, control panel, cabinet door, etc.
- Note: The catcher and pull are supplied.



開孔尺寸