

防水型平面門鎖



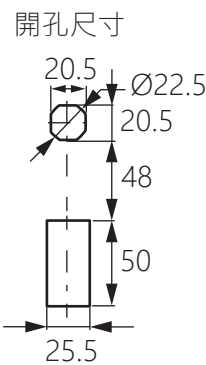
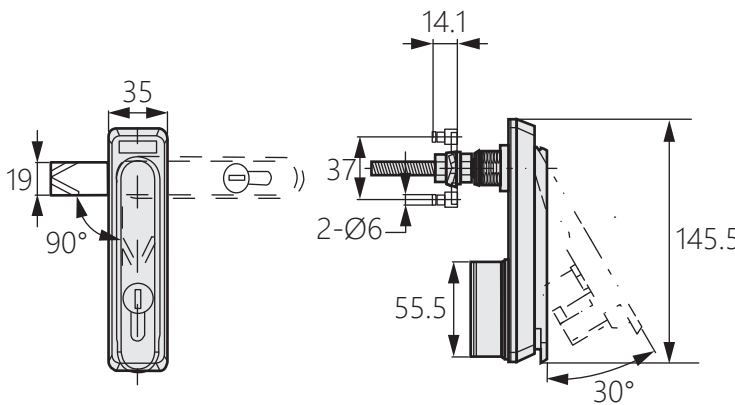
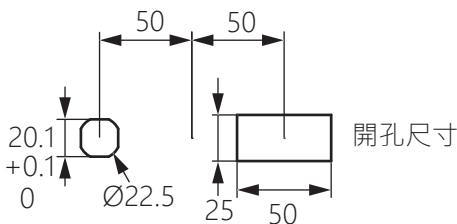
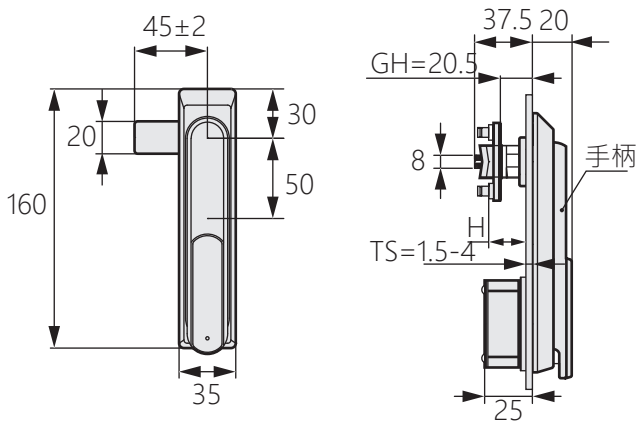
TM-870

Waterproof latch

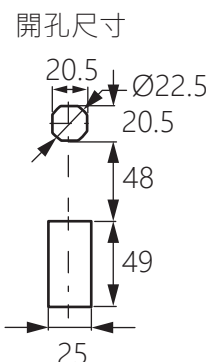
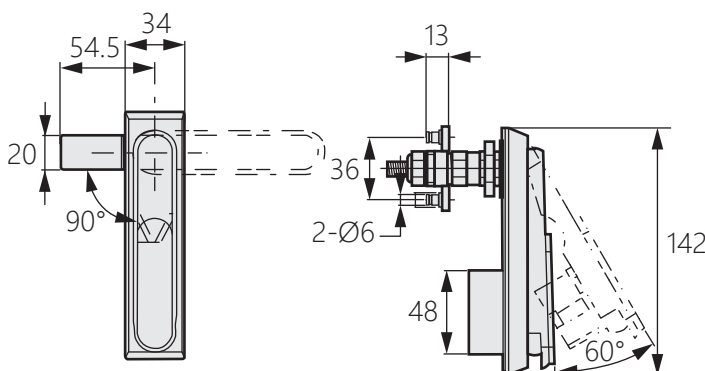
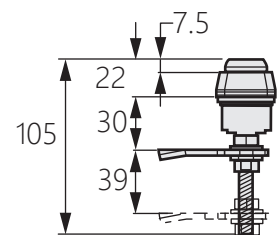
商品介紹 Product description



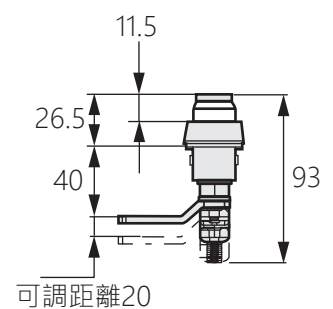
[TM-870-1]



[TM-870-2]



[TM-870-3]



TM-870-1 :

1. 使用防盜性強的鑰匙，適用於戶外。

2. 適用板厚：1.5-4mm

● 材質：鎖體、擋片-不鏽鋼(SUS304)

後方密封蓋-PA塑膠

TM-870-2.TM-870-3 :

1. 產品厚重，鎖定性能強。

2. 可配成三點鎖定的天地鎖。

● 材質：TM-870-2-鋅合金(ZDC)/TM-870-3-不鏽鋼

● 表面處理：TM-870-2-鍍亮鉻/TM-870-3-拉絲拋光

● 用途：環境設備、無塵室、醫療儀器。

TM-850-1 :

1. Use a strong anti-theft key for outdoor use.

2. Applicable board thickness: 1.5-4mm

● Material: Main body & dust cover-SUS316

Rear sealing cap-PA plastic

TM-870-2.TM-870-3 :

1. Heavy duty and strong latching performance.

2. Matching multi-point latching with three points.

● Material: TM-870-2-Zinc Alloy (ZDC)

TM-870-3-Stainless steel

● Finish: TM-870-2-Bright chrome plating

TM-870-3-Bright polishing

● Uses: Environmental equipment, clean room, medical equipment.